



Arab Academy
for Science Technology & Maritime Transport

The International Maritime
Transport and Logistics Conference
“Marlog 11”



Suez Canal Authority

Affiliated Companies

A Breakthrough Into The Future

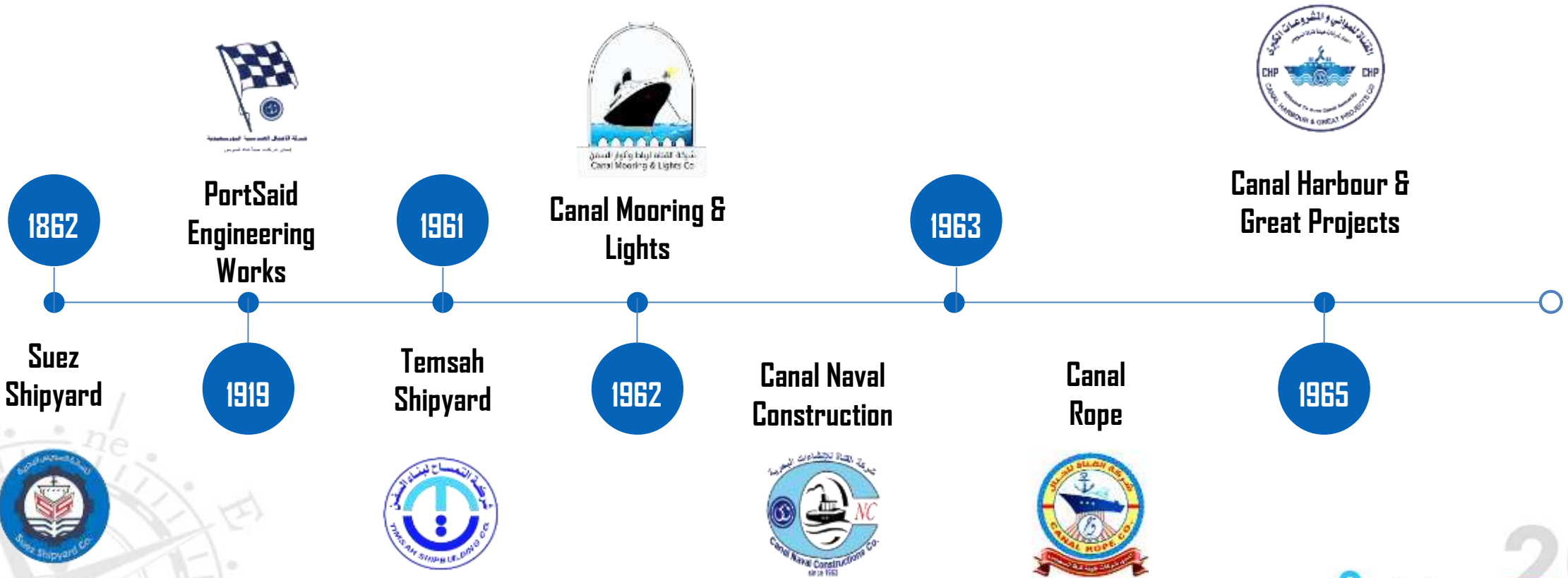


Towards a
SUSTAINABLE **BLUE**
ECONOMY

20 - 22 March, 2022
Hilton Green Plaza Hotel



SCA Affiliated Companies list





Partner



success





Petroleum Marine Services Co.



الشركة الوطنية لمنتجات الذرة
National Co. for Maize Products



11
Marlog
2022



الهيئة القومية
لمياه الشرب والصرف الصحي



وزارة الإسكان والمرافق والمجمعات العمرانية
Ministry of Housing, Utilities & Urban Communities



Companies Affiliate

About

us



Suez Canal Authorities Affiliated Companies.

- ❑ *A group of seven national companies, Affiliated by Suez Canal Authority, specialized in all activities required for **Marine services** , **Development & Reconstruction** and with Long-standing experiences combined with a great history of achievements.*
- ❑ *the companies has workshops that cover work all over Egypt with head offices located in Suez canal cities (Port said, Ismailia & Suez)*
- ❑ *Since 1919, the companies is not saving any efforts getting on the top of the Egyptian National Projects, obtaining the latest technologies and making the best use of all the available resources.*
- ❑ *We aim to provision of high quality services by the safest possible environment that conform fully with company & statutory requirements in meeting with our clients documented and implied expectations in terms of budget and time compliance.*

Vision and Strategic targets

Our vision 2030

- ❑ *Establishing one of the largest Multifunctional Corporation in the marine , steel structure & infrastructure field in Egypt and The Middle East.*

Strategic targets

- ❑ *Encourage the National industry using modern technologies for improving the manufacturing efficiency and covering the local needs.*
- ❑ *Moving from the local market to the global market, contributing to meeting the needs of the Middle-East region, invading the African market, and contributing to the formation of successful Egyptian-Arab and African trade relations.*
- ❑ *Introducing new activities for companies aiming to improve the field of Steel structure, steel storage tanks, pipe lines, shipbuilding and marine services for the development of the Suez Canal Economical Zone and to presenting a successful business model to encourage investments in the region.*
- ❑ *Introducing modern technology to the Egyptian fishing fleet and studying latest methods for treating and preserving fishes according to the international requirements and standards.*

Main



Activities



Main Activities



**Ports and Quays
Building & Maintenance**



Shipbuilding



Maritime Activities



Ship Repair



**Civil Activities &
Infrastructures**



Steel Structures



Floating Bridges

Horizontal Directional Drilling



**Storage Tanks and
Pipelines**



Dredging & Waterbreak



**Mooring ship
Light Projectors**

TIMSAH SHIPBUILDING Co.



- ❖ Building ships and marine units (tugboats, jet boats, service boats, passenger boats and LASH vessels).
- ❖ Marine constructions and building navigational aids (petroleum platforms, single-point mooring and light buoys)
- ❖ Steel structures and works (design, building, installation and maintenance of fuel and water tanks, land and marine pipelines, silos, CNC steel boards cutting and pipe bending, welding equipment and nondestructive testing devices).
- ❖ Ship repair (docking of floating units up to 1500 tons for overhauls, repair and maintenance)
- ❖ Design, construction, installation and maintenance of petroleum platforms, various types of floating berths and quays.
- ❖ Trained and skilled crew members on board the company's marine units.
- ❖ Renting the company's advanced marine units and tugboats with the DP2 system to oil companies.
- ❖ Dredging and clearing works of sweet [water channels](#) and drainages.
- ❖ Carrying out underwater welding and cutting operations by qualified divers, holders of the IMCA certificate, and ROVs.



Maritime Activities



Professional maritime services including the ROV and underwater operations.



SUB-ASSEMBLY WORKSHOPS



AHMAD FADEL M/V



MAIN DIMENSIONS

<i>LENGTH OVERALL</i>	<i>: 90.02 M</i>
<i>BREADTH MOULDED</i>	<i>: 18.80 M</i>
<i>DEPTH MOULDED</i>	<i>: 7.40 M</i>
<i>DESIGN DRAFT</i>	<i>: 5.00 M</i>
<i>MAX. DRAFT</i>	<i>: 6.05 M</i>
<i>DEAD WEIGHT</i>	<i>: 3969 T</i>
<i>GROSS TONNAGE</i>	<i>: 4744 T</i>
<i>NET TONNAGE</i>	<i>: 1423 T</i>
<i>LIGHT SHIP WEIGHT</i>	<i>: 3862 T</i>
<i>MAX SPEED @ 5 M</i>	<i>: 14.1KTS</i>
<i>DRAFT</i>	<i>: 195.3</i>
<i>FUEL CONSUMPTION</i> <i>(ECONOMIC SPEED)</i>	<i>G/KWH</i>

AHMAD FADEL M/V



DECK/AH EQUIPMENT

*TUGGER WINCH: 2 X 10T, DRUM CAPACITY:
100 M OF STEEL WIRE*

SUBSEA CRANE: ONE ACTIVE HEAVE

*COMPANSATED KNUCKLE BOOM, 75T@10M
OFFSHORE, 25T@21M HARBOR,
36T@8 M OFFSHORE UP TO 2000M WATER
DEPTH*

*PORTABLE GANGWAY: ONE ALUMINUM
GANGWAY, 6M LONG*

*TELESCOPIC GANGWAY: TWO TELESCOPIC
GANGWAY, 10 M LONG EACH*

ONE PROVISION CRANE: 2 T @ 10 M

AHMAD FADEL M/V



DSV AMAN



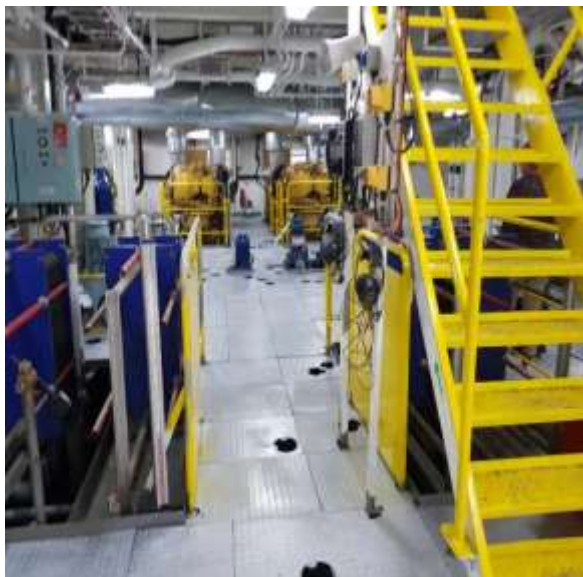
MAIN DIMENSIONS

<i>L.O.A.</i>	<i>85 m</i>
<i>L.W.L.</i>	<i>84.1 m</i>
<i>L.B.P.</i>	<i>77.75 m</i>
<i>Breadth molded</i>	<i>22 m</i>
<i>Depth molded</i>	<i>8 m</i>
<i>Draft molded</i>	<i>6.3 m</i>
<i>Deck Loading</i>	<i>7.5 T/m²</i>
<i>Deck Cargo</i>	<i>735 T</i>
<i>Capacity</i>	
<i>Clear Deck Area</i>	<i>735 m²</i>
<i>Moon Pool</i>	<i>8m*8m</i>
<i>Gang Way</i>	<i>6 m</i>
<i>Heli-Deck</i>	<i>Sikorsky S61</i>
<i>Trial Speed</i>	<i>12.5 Knots</i>

DSV AMAN

DECK/AH MACHINERY

<i>4. point Mooring Winches</i>	<i>4 x 40T@ 10m/min</i>
<i>Tigger Winches</i>	<i>2 x 10T@ 15m/min</i>
<i>Capstan</i>	<i>2 x 10T@ 15m/min</i>
<i>Main Crane</i>	<i>80 T SWL @ 25m Macgregor</i>
<i>Service Crane</i>	<i>3 T SWL @ 14m Taixin Haitai</i>



DSV AMAN



BADR I M/V



MAIN DIMENSIONS

<i>LENGTH OVERALL</i>	<i>: 67.3 M</i>
<i>LENGTH BP</i>	<i>: 64.3 M</i>
<i>BREADTH MOULDED</i>	<i>: 17.0 M</i>
<i>DEPTH MOULDED</i>	<i>: 6.50 M</i>
<i>DRAFT MOULDED</i>	<i>: 4.50 M</i>
<i>DEADWEIGHT</i>	<i>: 1700 T</i>
<i>GROSS TONNAGE</i>	<i>: 2441</i>
<i>SPEED</i>	<i>: 12.0 KNOTS</i>
<i>BOLLARD PULL</i>	<i>(APPROX)</i> <i>: 80 T</i>

*+ A1. TOWING VESSEL FIRE FIGHTING
VESSEL CLASS 1 , OFFSHORE SUPPORT
VESSEL AH, E+ AMS, + ACCU.*

+DPS-2 with HELIDECK

Portable flange facing machine for VSP propeller foundation



ROV Class II

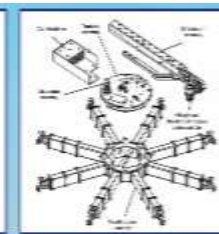
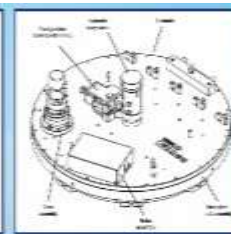
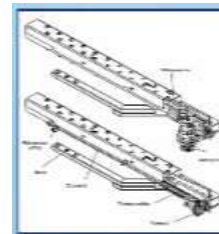


Specifications

Depth Rating	3000 msw
Length	1515 mm
Height	905 mm
width	1000 mm
Launch weight	580 kg
Forward speed	3.2 knots
Thrust forward	170 kgf
Thrust lateral	120 kgf
Thrust vertical	110 kgf
Payload	80 kg

PRINCIPAL DIMENSIONS:

Overall machine height - Milling	895 mm
Overall machine height - Turning	719 mm
Mounting base thickness	290 mm
Minimum mounting base diameter	1296 mm
Minimum rotational diameter	3482 mm



SHIPBUILDING

VSP 70 TONNES BP TUG BOAT (MASR EL GEDIDA)

MAIN DIMENSIONS

LENGTH OVERALL	35.8 M
BREADTH OVERALL	12.5 M
DEPTH	4.5 M
DRAFT	5.75 M
SPEED	13 Kn
BOLLARD PULL	70 Ton
FUEL TANKS CAPACITY	136 M ³
NO . OF CREW	12 PER.



SHIPBUILDING

8 TRAWLER “ NATIONAL PROJECT OF FISHING VISEL ”

MAIN DIMENSIONS

LENGTH OVERALL	23.9 M
BREADTH OVERALL	7.2 M
DEPTH	3.85 M
DRAFT	3.20 M
SPEED	9 Kn
FUEL TANKS CAPACITY	50 M ³
NO. OF CREW	14 PER.



SHIPBUILDING TUG BOAT “AZIMA”

MAIN DIMENSIONS

LENGTH OVERALL	18.6 M
BREADTH OVERALL	6.8 M
DEPTH	2.60 M
DRAFT	2.25 M
SPEED	10 : 11 K.n
BOLLARD PULL	12: 18 TON
FUEL TANKS CAPACITY	2/6 M ³
NO. OF CREW	4 PER.



Civil Works

- Building bridges and expanding sedimentation .1
basins “Suez Canal”
- Stapling sides of the Suez Canal .2
- Prefab buildings .3
- Concrete building .4
- Construction of water & sewage stations .5



Civil Works

Building bridges and expanding sedimentation basins



CANAL HARBOUR & GREAT PROJECTS Co.



- ❖ Construction, development and rehabilitation of ports in Egypt and abroad.
- ❖ Clearing and dredging works of ports and water channels.
- ❖ Building quays, platforms and ferry slips.
- ❖ Construction of abutments and berths for floating bridges.
- ❖ Construction and rehabilitation of shore protection structures and breakwaters.
- ❖ Construction of bridges, dams and water siphons.
- ❖ Construction of desalination plants, drinking water and sewage treatment plants.



Dredgers fleet



Name	AL HAMRA
Type	Heavy duty cutter suction dredger
Dredging depth	4.00 / 18.00 m
Diameter suction pipe	800 mm
Diameter suction pipe	800 mm
Diameter discharge pipe	750 mm
Power inboard dredge pump engine	KM6 2X3750 Bhp/ 2x2760 KW
Power main alternator engine	KM8 1x4700 Bhp / 1x 3460 KW



Name:	Arzana
Type & capacity:	Hopper dredger & 6000 m3
Dredging depth:	35 m
Diameter suction pipe:	1000 mm
Diameter discharge pipe:	900 mm
Draghead:	1 x Wild dragon
Dredge pump:	1 x Singe walled / HRMD 20243.10 / 3690 kW
Main Engines:	2 x Wartsila 8L32 (4240 kW each)

Dredgers



name	AL SADR
Type	Heavy duty cutter suction
Dredging depth	6.00 / 27.00 m
Diameter suction pipe	900 mm
Diameter discharge pipe	850 mm
Power inboard dredge pump engine	2X4,400 KW
Power main alternator engine	3X3,750 KW



Name	AL SHAHAMAH
Type	Beaver 3800, Cutter suction dredger
Dredging depth	2.50 / 16.00 m
Diameter suction pipe	700 mm
Diameter discharge pipe	650 mm
Power inboard dredge pump engine	2X954 kw @ 1600 rpm
Power auxiliary / Gen./ Harbour engine's	876 kw @ 1600 rpm / 91 kw / 25 kw
Power cutter motor / Cutter type RH rotation	562 kw / Escro RH 28 DS 6 Bladed

Dredger



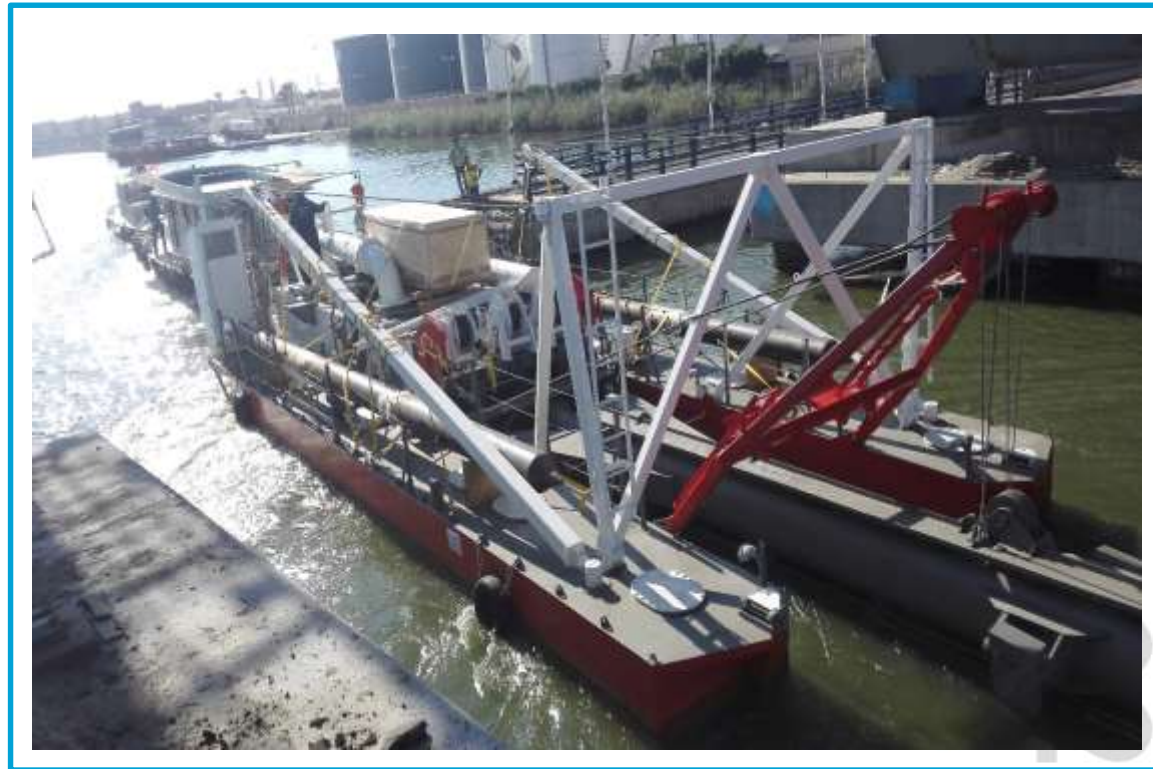
*2 Dredgers CZ-500
Dredging depth 14 Meter
1742 HP*



*3 Dredgers CZ-400
Dredging depth 10 Meter
1130 HP*

Dredging Works

- ✓ *Dredging of Al Manzala Lake*
- ✓ *Dredging of Al Bardawil Lake*
- ✓ *Dredging of Nile river*



Dredging & Water break



Every Port, Harbour, or lake designed with certain navigable depth in it's channel or water bodies for the safe passage of ships. you can count on our reliable, time optimized and cost effiecient maintenance dredging, capital dredging, beach nourishment, land reclamation, or shallow water dredging.

Civil Activities & Infrastructures

Sewage & water Treatment Stations



Dredgers



name	JANANAH
Type	Beaver 2400, Cutter suction
Dredging depth	2.10 / 14.00 m
Diameter suction pipe	600 mm
Diameter discharge pipe	550 mm
Power inboard dredge pump engine	1,275 KW @ 1600 rpm &
Power auxiliary / Gen./ Harbour engine's	465 KW @ 1800 rpm / 55 KW
Power cutter motor / Cutter type RH rotation	276 KW / Esco V23



Name	AL KHATEM
Type	Heavy duty cutter suction dredger
Dredging depth	4.00 / 18.00 m
Diameter suction pipe	800 mm
Diameter discharge pipe	750 mm
Power inboard dredge pump engine	KM6 2X3750 Bhp/ 2x2760 KW
Power main alternator engine	KM8 1x4700 Bhp, 1x3450 KW

Floating bridges berths

- Major general (Taha Zaki) floating bridge at Sarabium
- Conscript (Abanob Gerges) floating bridge at El Qantara
- EL NASR floating bridge at Port said



Potable & Waste water treatment plants, Intake of desalination plant

- Construction of potable water treatment plant at Ismailia
- Construction of 19 waste water treatment plants
- Construction of marine works of Baghoush desalination plant



Break waters & Shore protection

- Shore protection of Port said –
Damietta coastal roadshore
- Protection for engineers syndicate
club – Alexandria
- New Damietta port breakwaters



Bridges & Dams

- Construction of three bridges over Ibrahimia canal – Upper Egypt
- Construction of Raswa bridge at Port said
- Construction of El Karm Dam - North Sinai
- Construction of obstruction barriers – Nwibaa – South Sinai



Suez Shipyard Co.



- ❖ Repair and maintenance of marine units and vessels transiting the Suez Canal, since the company owns a floating dock with a capacity of 55000 tons, a dry dock with a capacity of 8000 tons and a mechanical slipway with a capacity of 900 tons.
- ❖ Building marine units (floating cranes - barges).
- ❖ Manufacturing and installing steel structures such as: trusses, lighting towers, tanks, and marine scaffolds.
- ❖ Manufacturing and maintenance of pipelines of various diameters.
- ❖ Laying water and sewage pipelines, and maintenance of pumping stations.
- ❖ Manufacturing pontoons and dredging discharge pipelines as well as maintenance of dredging machinery.



SHIP REPAIR



For Minimizing the cost and time, Ship Repair requires high response and great flexibility. We have the ability to repair all marine units and carrying out the required overhauls operations according to the international standards.

SHIP REPAIR



MAINTENANCE, REPAIR AND OVERHAUL **MRO**



- We have a broad capacity for commercial **MRO** work and maintenance sustainment.
- As well as scheduled work such as major overhauls and refits/refurbishment, We can undertake routine scheduled maintenance, mechanical, electrical and electronic repairs, structural work, damage repair, and attend to emergency breakdowns.

Floating Dock



The company has a floating dock is one of the largest dock in the world with a capacity of 55,000 tons, 302 meters in length and 55 meters in width currently.

Graven Dock



Graven dock is considered the nucleus of the establishment of Suez shipyard. This graven dock is one of the oldest historical places in Suez. This graven dock enables docking for medium sized vessel as it distinguish with lifting capacity 8000 tones , and 140 m length 22 m width.

Manufacture of 12 Buoys , weight 10 tons - 17 m³



Timeline of some of the company's achievements in civil works

2019



Changing the roof sheet of the covered hall 1 and 2 in Ismailia

2020



Execution of a 356-acre public water network, south of Port Said second stage

2020



Maintenance of sewage networks in the Authority's areas in Ismailia

2020



Establishing a new path and inspection rooms for telephone and fiber-optic networks at Suez

2020



Maintenance of the sewage treatment plant at suez

2020



The process of constructing an steel truss for water station in Ismailia



CANAL HARBOUR & GREAT PROJECTS Co.



- ❖ Building marine units (boats - tugboats - water and fuel barges - floating cranes - floating pumping stations - dredgers – split barges - ferries – river buses - floating restaurants - underwater survey boats - fishing boats - etc.).
- ❖ Transforming open-sea cargo ships into cruise ships.
- ❖ Steel works (pontoons and dredging discharge pipelines).
- ❖ Marine units maintenance and repair.
- ❖ Repair and overhaul for different engine types.
- ❖ Volvo service center.
- ❖ Construction of aluminum boats.
- ❖ Sheet piles maintenance and repair up to 18 m deep by means of DZI.
- ❖ Metal constructions (oil tanks - trusses - buoys – pilotage stations).
- ❖ Manufacturing alumetal structures.



Steel structure



*Navigation
Towers*



*Navigation
Towers*



Lighting poles

SHIPBUILDING



Long-standing experiences in building various types of Vessels according to the international classification societies.

SHIPBUILDING



Aluminium & fiberglass Boats Light Easy to Repair, saving fuel and operating costs. Using the latest technologies in manufacturing high quality Fiberglass and Aluminum boats.

SHIPBUILDING



SHIPBUILDING YARDS & WORKSHOPS



ALUMINUM WORKSHOP



PAINTING SHELTERS



3 Plasma Cutting Machines (CNC)



2 Plasma Cutting Machines (CNC)



Port-Said Engineering Works Co.

- ❖ Building and repairing of barges, tugboats and floating cranes, dredgers, ferries, boats and split barges.
- ❖ Building fiber glass boats.
- ❖ Design and construction of fuel storing tanks for power stations or oil products.
- ❖ Laying oil, water and gas pipelines.
- ❖ Building trusses, factories and workshops.
- ❖ Building steel bridges for highways and railways.
- ❖ Building drinking water, sewage treatment and desalination plants.



STORAGE TANK AND PIPE LINE



We have taken the lead in the execution of storage tanks with outstanding achievements in Engineering, procurement and construction of steel storage tanks Applying latest versions of standards & codes (API & AWWA)



STORAGE TANK AND PIPE LINE



*"Spherical"
Steel Tanks*

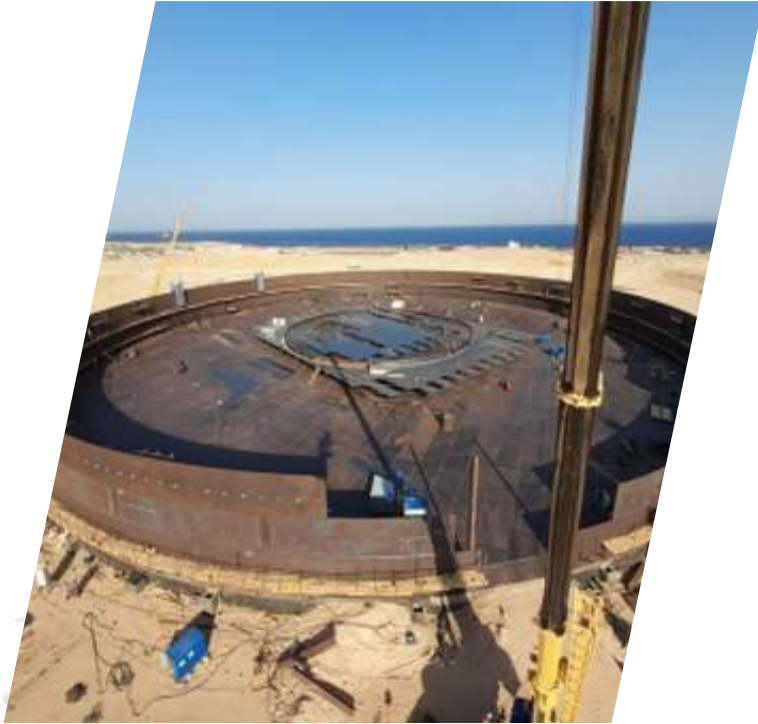


*"Stainless"
Steel Tanks*



*"Cryogenic Double
wall" Steel Tanks*

STORAGE TANK AND PIPE LINE



"Floating Roof "
Carbon Steel
Tanks



"Dome Roof"
Carbon Steel
Tanks



"fixed roof"
Carbon Steel
Tanks

STORAGE TANK AND PIPE LINE



We have executed many of the Egyptian grid of trunk pipelines for all services (oil, gas and products), we have executed large pipeline projects in Egypt and abroad.

FLOATING BRIDGES



Instead of suspension bridges across canals & rivers, unique floating bridges come at lower cost and have the flexibility of opening and closing for crossing vessels

Upper Steel Bridges



*we
participate in
transport
infrastructure
projects by
constructing
steel bridges
as a way to
improve the
communities
in which we
live*



FIBERGLASS WORKSHOP



Steel structure



"Floaters- Pipe holders"



"Floaters for dredging pipelines"



"Floaters- Water impurities barriers"

SLIP WAY
capacity
1500
TON



Canal Rope Co.



- **8-strand braided ropes (6 mm – 136 mm)**
 - ❖ (polypropylene – sisal – manila – polyamide)
- **4-strand braided ropes (6 mm – 52 mm)**
 - ❖ (polypropylene – Polyethylene – sisal – manila – polyamide – polypropylene multifilament)
- **Different sizes of yarn**
 - ❖ (sisal - polypropylene tape)
- **Handmade products**
 - ❖ (ladders – nets – hammocks)

Canal Rope co.



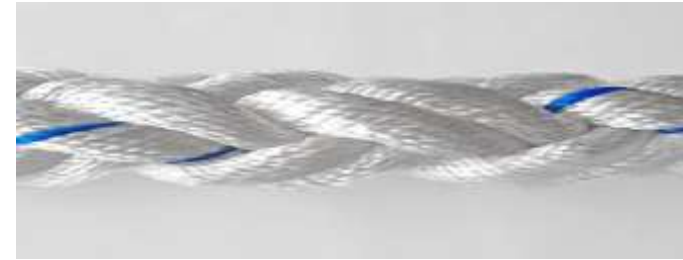
Our Products

- Braided mooring ropes 8- strand from 40mm up to 136mm

polypropylene



Nylon



- 3/4 – strand ropes from 6mm up to 52mm

polypropylene



Nylon



sisal



manila



polyethylene



Our Products

- Sisal twine & Polypropylene Tape baler twine (PP)



- Hammock beds & Nets & ship ladders & Hand made products



Canal Mooring & Lights Co.

Mooring:

- ❖ Mooring and unmooring of vessels at ports in (Port Said, Suez, Sharm El-Sheikh, Nuweibaa and Ain Sokhna)
- ❖ Providing the transiting vessels with the floating units and crews required for mooring

Lights:

- ❖ As per the SCA's Rules of Navigation, all transiting vessels are required to have lights of particular technical specifications. The company rents those lights upon request. It also owns lights of various types and specifications.
- ❖ Providing every transiting vessel with 2 skilled technicians to operate the lights.

Other Activities :

- ❖ Laying underground water and gas pipes, and electrical and telephone cables using horizontal directional drilling (HDD)
- ❖ Carrying out gas detection operations



A leading company in the field of maritime services

Port Said, Suez, Ain Sokhna, Nuweiba and Sharm El-Sheikh



Mooring Ships Activity

Canal Mooring and Lights Company is a leading Company in this field and one of the largest specialized companies in the world .

This activity consists in supplying and securing ships transiting Suez Canal with mooring boats from the company accompanied by Marine crews trained at the highest level, as well as mooring and unmooring incoming ships services at the ports (West Port Said - East Al-Tafria - Al-Adabiya Suez - Port Tawfiq - Ain Sukhna - Sharm El-Sheikh - Nuweibaa), and it has the abilities to extend its service to more ports within Egypt and the Arab world under the membership of the Arab ports union .



light projectors Activity



The company started working in this field since 1967 .

Light Ships activity supplies the ships transiting Suez Canal with light projectors ,as the company owns different types of searchlights with special technical specifications for the navigation .

The company also provides the ship's crew with two skilled electricians to accompany it while crossing the navigation channel .

Achievements

- ❑ *Construction of the electrical and mechanical components for 29 water treatment station with capacities ranges from 25000 m³/h to 86000 m³/h.*
- ❑ *Supply, Fabrication and assembly of 23 upper steel bridges all over Egypt.*
- ❑ *Supply, Fabrication and assembly of Floating steel bridges all over Egypt.*
- ❑ *Supply, Fabrication and assembly of more than 44 Floaters , pipe & cables holders.*
- ❑ *Supply, Fabrication and assembly of 23 Steel hangers.*
- ❑ *Supply, Fabrication and assembly of 4 Steel factories.*
- ❑ *Manufacturing more than 2000 steel objects steel, and aluminum (Buoys, Pipes, Steel Blocks , etc)*
- ❑ *The Fabrication and erection for 176 vertical fixed roof carbon steel storage tanks.*
- ❑ *The Fabrication and erection for 9 horizontal fixed roof carbon steel storage tanks.*
- ❑ *The Fabrication and erection for 14 Floating roof carbon steel storage tanks.*
- ❑ *The Fabrication and erection for 9 Dome roof carbon steel storage tanks.*

Achievements

- ❑ *Supply ,Fabrication and erection for 36 fixed roof stainless steel storage tanks.*
- ❑ *Erection of 2 double-wall cryogenic storage tanks.*
- ❑ *Assembly of 4 fire fighting Pipelines of diameter up to 12 inch & average total length 12550 m*
- ❑ *Assembly of 7 Petroleum Pipelines of diameter up to 48inch & average total length 152364 m.*
- ❑ *Shipbuilding more than 250 steel Vessels, fiberglass, and aluminum (Ferries, Tugs, Launches, Tankers, Bulk Carriers, Dredgers, Pilot Boats, Pontoons, Parges ... etc), beside the maintenance of more than 1000 vessels.*
- ❑ *construction of more than 40 Quays and Ports.*
- ❑ *More than 43 dredging operations (maintenance dredging, capital dredging, beach nourishment, land reclamation, or shallow water dredging).*
- ❑ *More than 31 Shore protection and breakwater barriers.*
- ❑ *More than 18 berths of ferry boats and floating bridges.*
- ❑ *Building more than 3 dams.*

Business

Development



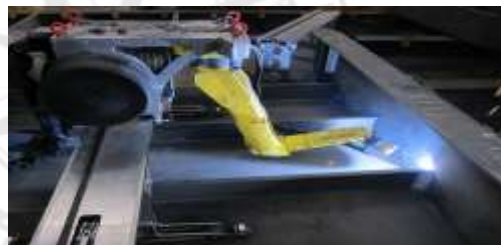
Business Development efforts



- ❖ Marketing to a brand new Concept of the first floating resorts, taking tourism to a higher new level.



- ❖ Developing our berths and quays to increase the areas designated for ship building and repair.



- ❖ Transferring the latest technologies into our industry.

Business Development efforts



- ❖ Improving the marine activity to cover a greater part of the local market from services units instead of relying mainly on foreign companies.



- ❖ Building new floating docks.



- ❖ Establishing a new container factory.

Business Development efforts

Marketing Efforts: ✓

Contracting with professional marketing companies. ❖

Participating in the international exhibitions ❖

Joint-ventures and co-operation deals with international companies. ❖





Co-operation Proposal & Technology Transferring



Shipbuilding



Building and Construction.



Towers and skyscrapers.



Factories and production lines.



Ports and Quays building and repair.



Factories and production lines.



Sports Stadiums and Sports Facilities



Renewable Energy and Power Stations



Storage Tanks and Pipelines.



Co-operation with Egyptian companies in the fields of Architecture design and construction



MARINE EQUIPMENT WORKSHOPS

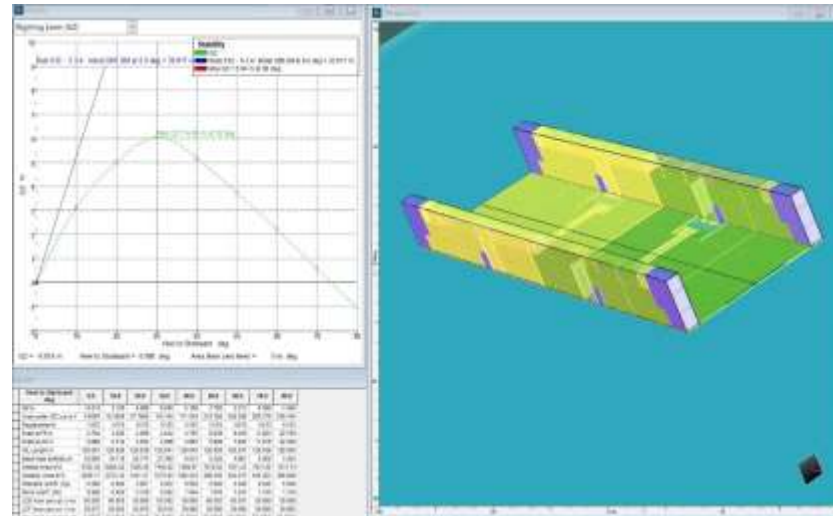
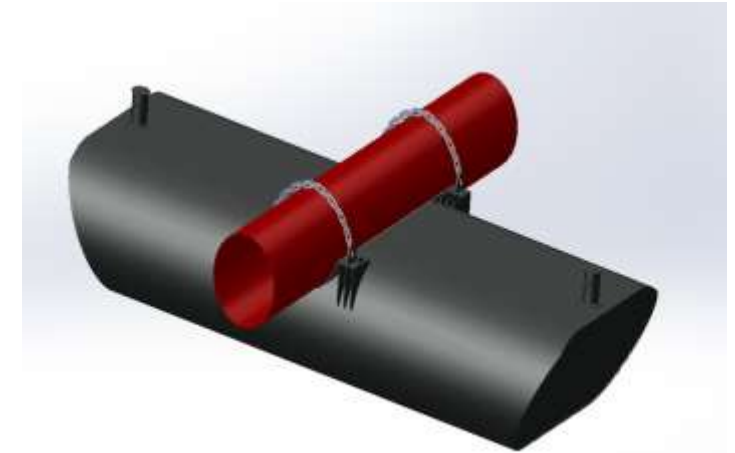
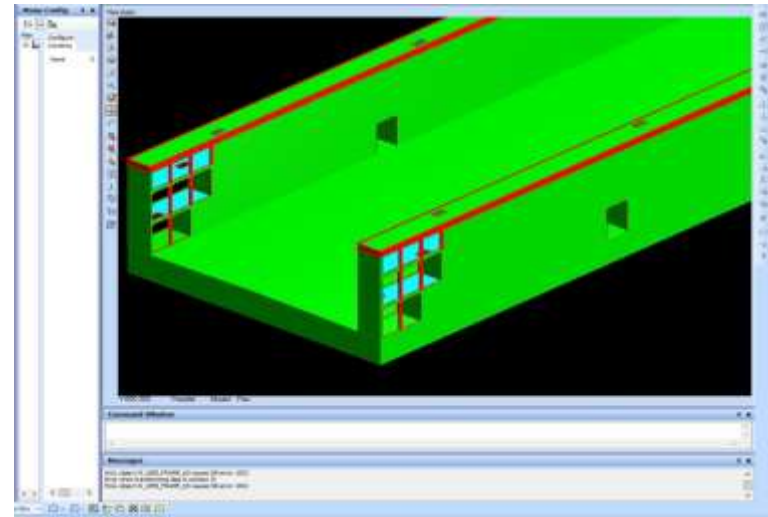


OUTFITTINGS WORKSHOPS



Design departments with the best design software.

AVEVA MARINE – SOLIDWORKS – CATIA MARINE – AUTOCAD - MAXSURF



The International Maritime
Transport and Logistics Conference
“Marlog 11”



Thank YOU

Towards a
SUSTAINABLE **BLUE**
ECONOMY

20 - 22 March, 2022
Hilton Green Plaza Hotel